

PACIFIC
SYMPHONIC
WIND
ENSEMBLE



War
Horse

"BENEATH ALL THAT GLITTERS
BEATS A GREAT BIG SEQUINED
HEART"



MAGICAL MUSICAL MYSTERY TOUR



OUTRAGEOUS FUN!

PRISCILLA

FUEL

THE CHANGE GROUP

BEST MUSICAL

MONEY EXCHANGE



November 3, 2024
@ 3:00PM

Evergreen Cultural Centre
#1205 Pinetree Way,
Coquitlam





Greetings beloved audience. Welcome to the Pacific Symphonic Wind Ensemble's 2024-2025 season. Aside from today's presentation we have *Holidays* show in December, *It's the Weather* in March and *The Sixties* in June.

This afternoon we explore Musicals (mainly Broadway musicals) with some Beatles thrown in for "Mystery". Every number in this show is very-to ultra-well known by most people so there is no mystery there but the settings are engaging and usually fast-paced so you'll have to keep up. We are covering decades for an organizing principal from the 1930s "Love for Sale" to the 1990s, Lion King Medley. We are also delighted to feature a wonderful young vocalist, Trinity Haylii, on a few tunes.

So, get ready for toe-tapping fun.

Be sure to keep an eye out for our 2024/25 season concert dates so you won't miss a note!



PACIFIC SYMPHONIC WIND ENSEMBLE

David Branter, conductor

Broadway Show Stoppers

Arr. Warren Barker

American in Paris

**George Gershwin
Arr. John Krance**

Beatles: Echoes of an Era

Arr. John Higgins

Broadway Curtain Time

Arr. John Krance

Cole Porter Medley

Feature vocalist:
Trinity Haylii

Arr. Fred Stride

Intermission

Lion King Medley

**Elton John & Han Zimmer
Arr. Kazuhiro Morita**

Selections from Chicago

Arr. Ted Ricketts

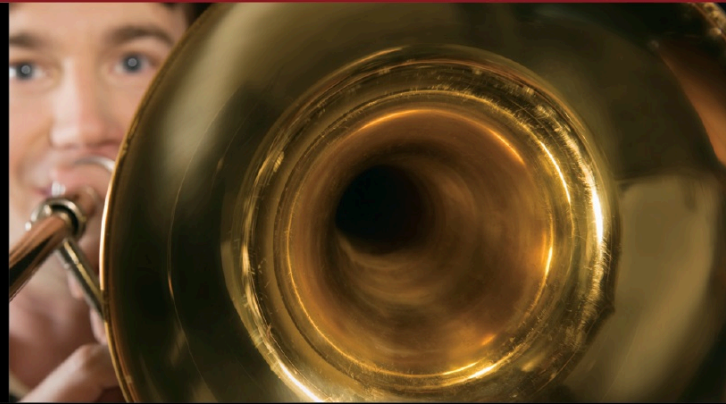
Selections from Phantom of the Opera

**Andrew Lloyd Webber
Arr. Warren Barker**



TAPESTRY MUSIC

BC Family Owned and Operated since 1996



Brands

Yamaha
Jupiter
Eastman
Conn-Selmer
Backun
John Packer
Vandoren
Ludwig
Sabian
Roland
Hal Leonard
Alfred

& many more!

Free shipping
anywhere in Canada
for orders over \$199



Services

Band and String Rentals
Full Service Repair Shops
Two Music Schools
Loyalty Rewards Program
Professional Advice



tapestrymusic.com



LOCATIONS!

White Rock 1335 Johnston Rd.
PH 604.538.0906 TF 1.888.347.7480

Vancouver 4440 West 10th Ave.
PH 604.736.3036

Victoria 1824 Government St.
PH 250.590.0752

The genre or, dare we say it, art form, known as Musical Theater has many antecedents and connections such as Vaudeville, Operetta, Light Opera and Musical Revues. I am no historian of the form but there was a production called the Black Crook that was first produced in post-bellum America in 1866 that had many of the hallmarks of what we would call a musical. It had dialogue and songs, spectacular effects and a final scene where skimpily-clad Amazons defeat the forces of evil. I don't know about choreography.

The Musical theater we know and recognize had its origins in Great Britain and the US in the later 19th century. Jacques Offenbach and Gilbert and Sullivan had their influence but it was home-grown talent in the US that propelled the form. By 1927 with Showboat there was a masterpiece based on an American story by Edna Ferber. The "Musical" is as much a "gesamtkunstwerk" (a term the superb scholar Carl Dahlhaus described in his Nineteenth Century Music as a 'pompous synonym for theater') as any Wagner opera although, of course, endless arguments can be generated regarding the relative artistic worth of Die Meistersinger and West Side Story. Why bother. I love both.

So today we explore mainly Broadway musicals because that's easy. We cover the 30s and 40s with Cole Porter, the 50s with An American in Paris (admittedly a movie), the 60s with "Hello dolly" and "Mame", the 70s with Chicago, the 80s with The Phantom of the Opera and the 90s with The Lion King. We had to do the Beatles as well from Magical Mystery Tour comes "Fool on the Hill". We make music.

WHERE THE

MUSIC BEGINS



Long & McQuade
MUSICAL INSTRUMENTS 

Proud Supporter of the Pacific Symphonic Wind Ensemble

To find a location nearest you or to shop online, visit us at www.long-mcquade.com

Dr. David Branter has a BM, MM, and DM from Indiana University and performs as both a classical and jazz saxophonist and clarinetist. He has acted as Music Director for the Pacific Symphonic Wind Ensemble (PSWE) from 1996-1999 and again starting in 2013. In July of 2015, Dr. Branter directed PSWE in two programmes and premiered several works with PSWE, including the titles Cool (February 2007), Hip (March 2012), and The Tribe part 1, (November 2014). David Branter performs regularly with jazz groups led by Alan Matheson, as well as John Korsrud's Hard Rubber Orchestra. He has taught at Douglas College, UBC's School of Music, and from 1979, at Vancouver Community College. Dr. Branter retired from VCC as of 30th of April 2018.



The **Pacific Symphonic Wind Ensemble** is a 45-piece band made up of woodwind, brass and percussion instruments. The highly skilled adult musicians come from many different walks of life, but all aspire to present the best performances of modern wind band music through a regular four concert season. PSWE is also an active supporter of student musicians, and offers workshops and masterclasses, as well as joint concerts with school groups. Individuals also often serve as mentors to your players.

For more information on PSWE, visit our website: <http://pswe.ca>

Or follow us on our socials:

Facebook: @PacificSymphonicWindEnsemble, Instagram: @pswe.windensemble

Charitable Registration Number 893189365RR0001

Music Director

Dr. David Branter

Associate Conductor

Christin Reardon
MacLellan

Flutes/Piccolos

Miranda Doherty
Marni Johnson
Cheryl McHugh
Ellie Siden
Sheila Woody

Oboes

Heather Hicks
Teigan Paish

Clarinets:

Mary Backun
Robert Buckley
Allan Hicks
Iris Hwang
Lasse Leslie
Marcia Nottle
Donella Robb
Robert Sheffield
Louise Whitehead
Peter Zajonc

Eb Clarinet:

Donella Robb

Alto Clarinet:

Marcia Nottle

Bass Clarinet

Jack Liang

Saxophones

Bryan Canuel
Valerie Crocker
Luke Vincent
Tina Wang

Bassoons

Julia Nolan
Kyrie Vincent

Trumpets

Jeremy Backun
Garth Balint
Laura Iwan
Steve Thompson
Brenda Wilson

Horns

Steve Ho
Mauren Hole
Brenda Larsen
Adam Law
Bo Li
Brenda Wilson

Euphonium

Tom Angelus
Brenda Wilson

Trombones

Greg Passmore
Gerald Rogers
Matt Taylor

Tubas

Alasdair Cameron
Noel MacDonald

String Bass

Tom Angelus

Percussion

David Bradshaw
Ji-in Hum
Gordon Koch
Alexei Paish
Allan Roszmann

Piano/synth

Tina Wang

Vocalist

Trinity Haylii

Recording Engineer

Chris Haas

Musical performances
donated by members
of the Vancouver
Musicians Association,
Local 145, CFM

PSWE BOARD OF DIRECTORS

Jeremy Backun - President

Lasse Leslie - Vice President

Maureen Hole - Treasurer

Heather Hicks - Secretary

Mary Backun, Alexei Paish, Teigan Paish, Tina Wang

--Members at Large

Contact us: info@pswe.ca

Help us continue to bring music to you.

**support us further by making a tax deductible
donation online to the Pacific Symphonic
Wind Ensemble using the QR code below**



**Pacific Symphonic Wind Ensemble gratefully
acknowledges the financial contributions of
our advertisers, donors, and supporters.**

**JOIN THE PSWE MAILING LIST and don't miss
a note from our upcoming events**





Your Band Music Specialists

tomleemusic.ca

We now offer band instrument rentals online! ▼



VANCOUVER: 728 Granville St. 604.685.8471 (Canada Line-City Centre | Expo Line-Granville)
RICHMOND: 3631 No. 3 Rd. 604.273.6661 (Canada Line-Aberdeen)

COQUITLAM 604.941.8447 | **LANGLEY** 604.532.8303 | **VICTORIA** 250.383.5222

tomleemusic.ca



KEEP UP WITH ALL THINGS EVERGREEN!

Scan this QR code to explore an up-to-date list of our upcoming concerts, events, exhibitions, public programs, and more.



