



# Holidays

*with Pacific  
Symphonic Wind  
Ensemble*

**DECEMBER 7, 2024  
@ 7:30PM**

Evergreen Cultural Centre  
#1205 Pinetree Way,  
Coquitlam





Welcome everyone,  
It is Holiday celebration time with the Pacific Symphonic Wind Ensemble. While many of us are dealing with Christmas at this time of year we present other holidays on this program including one for buglers. Obviously human beings love to celebrate things and we are here tonight to do that. Unplug please from specifics and just celebrate the holiday.



**Be sure to keep an eye out for our 2024/25 season  
concert dates so you won't miss a note!**

March 2, 2025 - It's the Weather  
June 1, 2025 - The 60s'

**KEEP UP WITH ALL THINGS EVERGREEN!**

Scan this QR code to explore an up-to-date list of our upcoming concerts, events, exhibitions, public programs, and more.

# PACIFIC SYMPHONIC WIND ENSEMBLE

David Branter, conductor

**Home for the Holidays**

**Robert Allen  
Arr. John Higgins**

**Bugler's Holiday**

**Leroy Anderson**

**Fete Dieu a Seville**

**Isaac Albeniz  
Arr. Lucien Cailliet**

**My heart is Filled with Longing**

**J.S. Bach  
Tran. Alfred Reed**

**A Charlie Brown Christmas**

**Vince Guaraldi  
Arr. Carl Strommen**

## **Intermission**

**Festive Overture**

**Dmitri Shostakovich  
Arr. Donald Hunsberger**

**Christmas Festival**

**Leroy Anderson**

**Greensleeves**

**Traditional; arr. Alfred Reed**

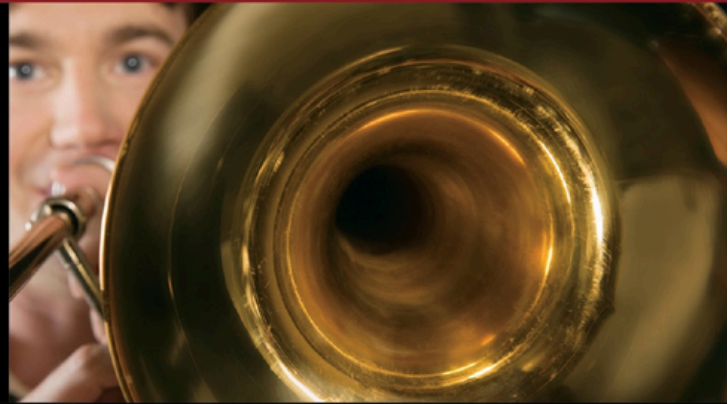
**The Wonder of Christmas**

**Arr. John Moss**



# TAPESTRY MUSIC

BC Family Owned and Operated since 1996



## Brands

Yamaha  
Jupiter  
Eastman  
Conn-Selmer  
Backun  
John Packer  
Vandoren  
Ludwig  
Sabian  
Roland  
Hal Leonard  
Alfred

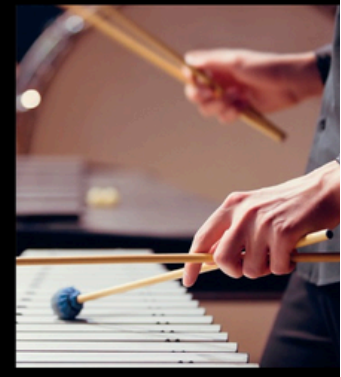
& many more!

Free shipping  
anywhere in Canada  
for orders over \$199



## Services

Band and String Rentals  
Full Service Repair Shops  
Two Music Schools  
Loyalty Rewards Program  
Professional Advice



[tapestrymusic.com](http://tapestrymusic.com)



LOCATIONS!

**White Rock** 1335 Johnston Rd.  
PH 604.538.0906 TF 1.888.347.7480

**Vancouver** 4440 West 10th Ave.  
PH 604.736.3036

**Victoria** 1824 Government St.  
PH 250.590.0752

People like to celebrate holidays with music. Paintings and sculpture might do to represent the event but when it comes time only music will do (OK, perhaps dance) to celebrate or accompany celebrations. Music provides motive and sonic energy for dance though and, with its evocative power, allows all listeners to experience and feel the occasion in their own way. Music can become very specific in its vagueness.

We have celebrations of ballet (Shostakovich), the Eucharist (Albeniz), Buglers (Anderson), one's relationship with God (Bach) plus a bunch of Christmas-related stuff not all of which is our usual fare. I honestly do not know but I suspect every day of the year is a holiday somewhere so let's celebrate now. It will do us good.

# WHERE THE MUSIC BEGINS



Proud Supporter of the Pacific Symphonic Wind Ensemble

To find a location nearest you or to shop online, visit us at [www.long-mcquade.com](http://www.long-mcquade.com)

Dr. David Branter has a BM, MM, and DM from Indiana University and performs as both a classical and jazz saxophonist and clarinetist. He has acted as Music Director for the Pacific Symphonic Wind Ensemble (PSWE) from 1996-1999 and again starting in 2013. In July of 2015, Dr. Branter directed PSWE in two programmes and premiered several works with PSWE, including the titles Cool (February 2007), Hip (March 2012), and The Tribe part 1, (November 2014). David Branter performs regularly with jazz groups led by Alan Matheson, as well as John Korsrud's Hard Rubber Orchestra. He has taught at Douglas College, UBC's School of Music, and from 1979, at Vancouver Community College. Dr. Branter retired from VCC as of 30th of April 2018.



The **Pacific Symphonic Wind Ensemble** is a 45-piece band made up of woodwind, brass and percussion instruments. The highly skilled adult musicians come from many different walks of life, but all aspire to present the best performances of modern wind band music through a regular four concert season. PSWE is also an active supporter of student musicians, and offers workshops and masterclasses, as well as joint concerts with school groups. Individuals also often serve as mentors to your players.

For more information on PSWE, visit our website: <http://pswe.ca>

Or follow us on our socials:

Facebook: @PacificSymphonicWindEnsemble, Instagram: @pswe.windensemble

Charitable Registration Number 893189365RR0001

**Music Director**

Dr. David Branter

**Associate Conductor**

Christin Reardon  
MacLellan

**Flutes/Piccolos**

Marni Johnson  
Sabine Lague  
Cheryl McHugh  
Ellie Siden  
Sheila Woody

**Oboes**

Heather Hicks  
Shannon Long

**English Horn**

Heather Hicks

**Clarinets**

Mary Backun  
Robert Buckley  
Allan Hicks  
Iris Hwang  
Lasse Leslie  
Marcia Nottle  
Walter Quan  
Robert Sheffield  
Louise Whitehead  
Peter Zajonc

**Alto Clarinet**

Marcia Nottle

**Bass Clarinet**

Jack Liang

**Saxophones**

Bryan Canuel  
Valerie Crocker  
Luke Vincent  
Tina Wang

**Bassoons**

Julia Nolan  
Kyrie Vincent

**Trumpets**

Jeremy Backun  
Heidi Goetz  
Don Harder  
Steve Thompson  
Alex Wang

**Horns**

Steve Ho  
Maureen Hole  
Brenda Larsen  
Adam Law  
Bo Li  
Brenda Wilson

**Euphonium**

Drew Dumas  
Brenda Wilson

**Trombones**

Greg Passmore  
Gerald Rogers  
Matt Taylor  
Robert Toren

**Tubas**

Alasdair Cameron  
Noel MacDonald

**String Bass**

**Percussion**

David Bradshaw  
Gordon Koch  
Alexei Paish  
Gord Roberts  
Allan Roszmann

**Harp**

Abigail Madar

**Piano**

Robert Buckley

**Recording Engineer**

Chris Haas

Musical performances  
donated by members  
of the Vancouver  
Musicians Association,  
Local 145, CFM

**PSWE BOARD OF DIRECTORS**

**Jeremy Backun - President**

**Lasse Leslie - Vice President**

**Alexei Paish- Treasurer**

**Heather Hicks - Secretary**

**Mary Backun, Maureen Hole, Tina Wang**

**--Members at Large**

**Contact us: [info@pswe.ca](mailto:info@pswe.ca)**

**Help us continue to bring music to you.**

**support us further by making a tax deductible  
donation online to the Pacific Symphonic  
Wind Ensemble using the QR code below**



**Pacific Symphonic Wind Ensemble gratefully  
acknowledges the financial contributions of  
our advertisers, donors, and supporters.**

**JOIN THE PSWE MAILING LIST and don't miss  
a note from our upcoming events**





# Your Band Music Specialists

[tomleemusic.ca](http://tomleemusic.ca)

We now offer band instrument rentals online! ▼



**VANCOUVER:** 728 Granville St. 604.685.8471 (Canada Line-City Centre | Expo Line-Granville)  
**RICHMOND:** 3631 No. 3 Rd. 604.273.6661 (Canada Line-Aberdeen)

**COQUITLAM** 604.941.8447 | **LANGLEY** 604.532.8303 | **VICTORIA** 250.383.5222

[tomleemusic.ca](http://tomleemusic.ca)